

No End In Sight For New Sizes

NEW PRODUCT BULLETIN!!!

Ward's hears requests for more sizes... Ward's takes Action!

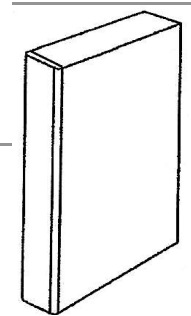
No matter what size choices are available for any product, from potato chips (now your hungry, right?)...to cabinets...to cars...to houses, you always need a size that is not "on-the-shelf." Well, Ward's is on a mission to reduce those occasions when you need a cabinet or trim size not shown. Take a look at some new sizes that we are adding to our catalog **in late June 2008:**

End Panels & End Panels with Fillers:

- Adding 48" and 60" heights!

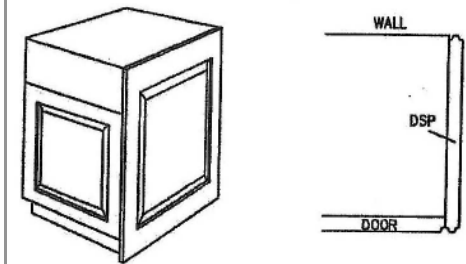
Box Column Fillers (Base Heights and Depths):

- Adding a 3" width choice!



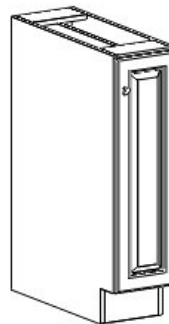
Decorative Side Panels for Base Cabinets (DSPB):

- Adding a 15" Depth!



Tray Base Cabinets:

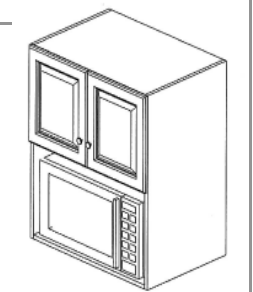
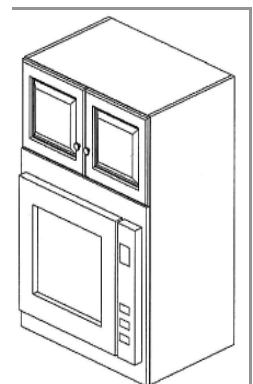
- Adding a 6" wide unit!
- Note: 6" wide unit available with slab door only



Product details can be found in our upcoming June, 2008 Specification Book Revision.

Microwave Cabinet & Microwave Cabinet with Frame:

- Adding 39" heights!



Thanks for choosing Ward's!


Ward's Cabinetry
Everybody's beauty mark.

